

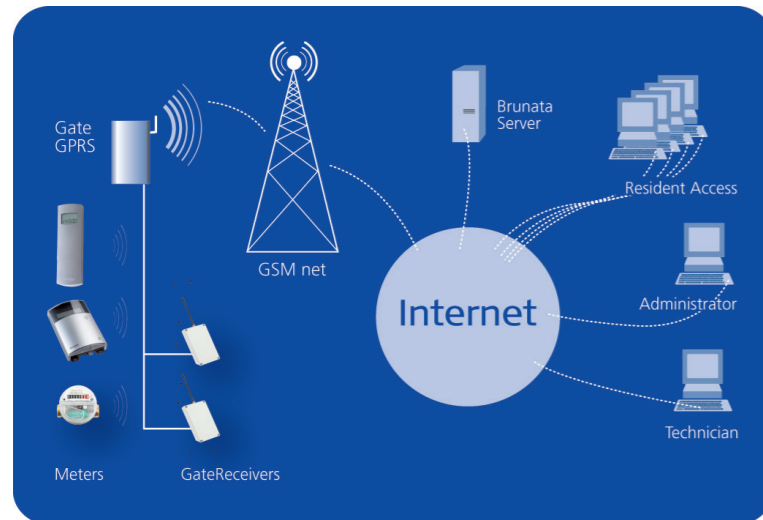
# BrunataNet

BrunataNet is the collective name for Brunata's remote reading systems, which consist of two standard systems: A partially cabled system and a purely radio-based system. They are both designed to meet various requirements in both small and large buildings.

BrunataNet ensures accurate and secure transfer of meter data from consumption meters to Brunata's database-server. Here, selected data can be retrieved and used e.g. for allocation accounts and presentation via WebMon and WebMon Visual. (See next page).

## System description

All meters, including humidity, water, energy, electricity and gas meters, can be connected to the system – as long as they have pulse output. Meter data are transferred wirelessly from the meters to strategically located receivers. If the system is partially cabled, the information is transferred via Brunata Bus (RS485 network) to a centrally located GateLAN or GateGPRS. GateLAN is connected to the internet GateGPRS, to the GSM network. Data are transmitted to Brunata's database-server.



### Online services – status monitoring

If you want to have information and an overview of the operating condition or status in your property or part of the property at any time of the day or night, you can now obtain these from any PC via the Internet. WebMon Visual allows a detailed insight into the total comfort condition of the property.

# Brunata Online

## Brunata WebMon

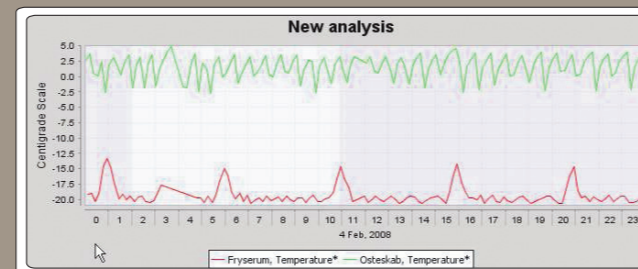
WebMon provides you with an overview of your consumption. WebMon is a browser-based software module, developed by Brunata a/s, for presentation of remotely read data via the internet. WebMon allows you to see and print out the information available in your BrunataNet system. When WebMon is connected to an installation in a building, it contains all information about the system.

In principle, everyone can be given access to data, but as the requirements differ, the system is divided into two different levels:

1. Administrators (managers, caretakers etc.), who need an overview of the entire meter portfolio in the building and want to follow the total consumption of the building.
2. Residents and users, who need access to parts of the system in order to monitor their own consumption and perhaps relate it to consumption of a similar apartment.

## Brunata WebMon Visual

WebMon Visual is an additional module for WebMon, which presents current data in clear, graphic form. The system is particularly well-suited for presenting temperature and consumption data collected at short intervals. It can e.g. provide graphs showing consumption on a daily or hourly basis.



## Brunata WebArchive

A static archive of bills, allocation lists, control reports, etc. in pdf format. The information goes back up to five years and can be retrieved via the internet.

**Brunata helps you control energy efficiency and optimise resources!**

# Brunata

Brunata a/s · Vesterlundvej 14 · DK-2730 Herlev · tel. +45 77 77 70 00  
fax +45 77 77 70 01 · www.brunata.com · brunata@brunata.com

UK-QB 10.1334/22.11.2010

# Brunata DriveBy

– mobile and remote meter reading



# Brunata

# Brunata DriveBy

## For those who do not want to spend time on meter reading

Many cost allocators are read manually by a visiting meter reader. This method usually requires the resident to be at home during the visit, which can be very inconvenient.

To avoid wasting valuable working or leisure time, Brunata has developed a flexible mobile solution, which meets the requirements at a very reasonable price. The solution is wireless and simple.

## How does Brunata DriveBy work?

Brunata DriveBy reads every meter type in the Brunata Futura<sup>+</sup> family, as they are all supplied with radio transmitters. Immediately after the end of the billing period, a Brunata employee reads the meters using a DriveBy GateReceiver. The meters automatically send account data, which are received by the DriveBy GateReceiver. At the end of the reading, encrypted data are transferred directly to a database-server. Brunata collects data from the server for its allocation service and then quickly and effectively prepares the allocation accounts.

The system can be used at any time, but in most cases it is only used in connection with the annual reading.

## Many advantages for resident, caretaker and administrator

- No unnecessary visits to every single flat
- No need to collect keys from residents
- Simultaneous reading of all meters
- Minimal risk of manual reading mistakes
- Easy administration for caretaker/boiler man/property administrator

Brunata DriveBy is the ideal solution for people who want the allocation accounts prepared easily and smoothly. However, Brunata DriveBy can also be upgraded to a more stationary system, which reads meters at intervals down to a few minutes.

This allows online operation optimisation, continuous monitoring of the humidity level in any building and calculation of the energy efficiency based on measurements. For more information about this option, see the back of this brochure or contact Brunata.

## Many possibilities!

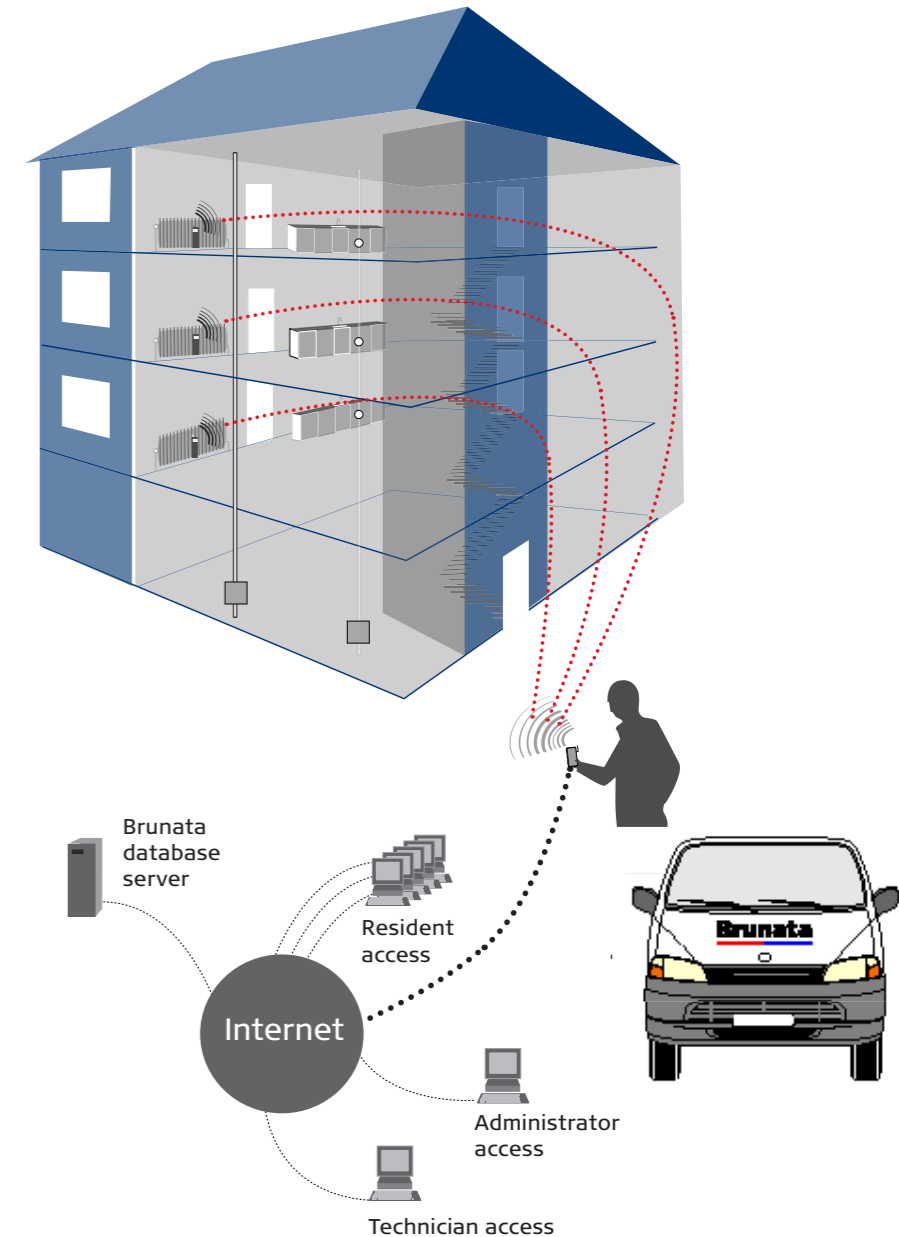
Currently, most people focus on heat and water consumption, but in fact all pulse-emitting meters can be integrated in the system. All electronic consumption meters with radio transmitter or pulse outlet can be connected to a system with a Brunata DriveBy solution:

- Brunata Futura<sup>+</sup> electronic heat cost allocator
- Brunata Futura Geysir<sup>+</sup> electronic hot water allocation meter
- Brunata Futura Comfort<sup>+</sup> electronic temperature meter for measuring room or outside temperature
- Brunata Futura Floor<sup>+</sup> electronic heat cost allocator for horizontal surfaces (floor heating)
- Brunata Futura Signal<sup>+</sup> electronic pulse collector with radio transmitter

## Brunata DriveBy – a step into the future

With Brunata DriveBy, you are ready for the future. Once Brunata Futura heat cost allocators have been installed, you just need to install a network, which automatically receives and sends data to Brunata. At Brunata, the data are saved on the database-server and processed in our presentation programmes WebMon and WebMon Visual.

Via WebMon and WebMon Visual, you can monitor consumption on a daily basis and potentially compare the consumption directly with that of similar flats. You can also see a consumption prognosis, how your payments on account match the actual consumption and much more.



### Brunata DriveBy – a flexible and convenient solution

A service technician from Brunata reads the meter using a DriveBy receiver. All meters in the property are read within a short time, so that the allocation accounts can be prepared.