

► Installation instructions Brunata ETR Cold and hot water meter with and without pulse

Note

These installation instructions are intended for trained personnel. Basic procedures are therefore not described in detail.

Installation point

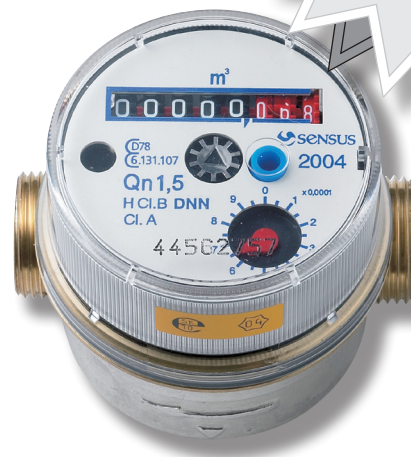
A water meter must be fitted on each supply pipe. Ensure that all tap points are covered by a meter.

Water meters must never be fitted on circulation pipes.

During installation, make sure that it is easy to replace and read the meter later on.

Installation of the meter

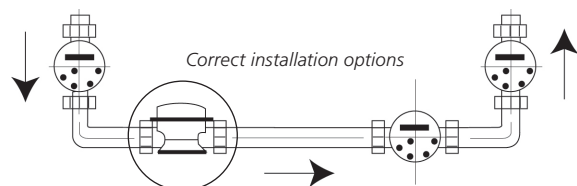
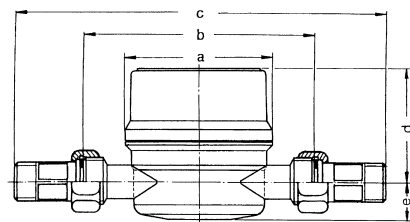
- Insert stop valve (inlet valve to water meter) before the connecting piece in the inlet pipe. It is convenient to use Brunata's ball valve with built-in dirt filter, which can be cleaned without dismantling the meter.
- Fit a pass piece instead of the meter and flush the water pipe thoroughly to remove any flakes and particles.
- Turn off the water supply and drain the pipe.
- Fit the meter with R1/2" screw couplings in one of the illustrated positions with the water flowing in the direction of the arrow.
- Tighten the couplings and gasket the meters through the holes in the couplings.
- Turn on the water and check that gaskets are tight and that the meter is counting.
- For pulse meters: Connect the cable to the pulse collection box (must not be extended).
- Water meter with ClickOn radio transmitter sends a telegram every 2nd minute.
 - The periods water consumption
 - Last periods water consumption
 - Status
 - Meter number



Dimensions

| Meter length | Length with couplings | Meter thread | Coupling thread | Cable length pulse counter | Pulse value* Lit/pulse |
|--------------|-----------------------|--------------|-----------------|----------------------------|------------------------|
| 80 mm | 160 mm | G3/4B | R1/2" | 1,5 m | 10 l/p |
| 110 mm | 190 mm | G3/4B | R1/2" | 1,5 m | 10 l/p |
| 130 mm | 210 mm | G3/4B | R1/2" | 1,5 m | 10 l/p |

*) Contact load on meters with pulse output: Max. 24VAC – 0.2 A



The circle indicates the position where the meter is most accurate, Class B. In the other positions, the meter's accuracy is Class A.

Brunata is a 100 % Danish owned company. We have more than 90 years of experience within developing and producing heat cost allocators and heating accounts. Brunata a/s has implemented a quality system in accordance with EN ISO 9001. Please contact us for further information on our products.